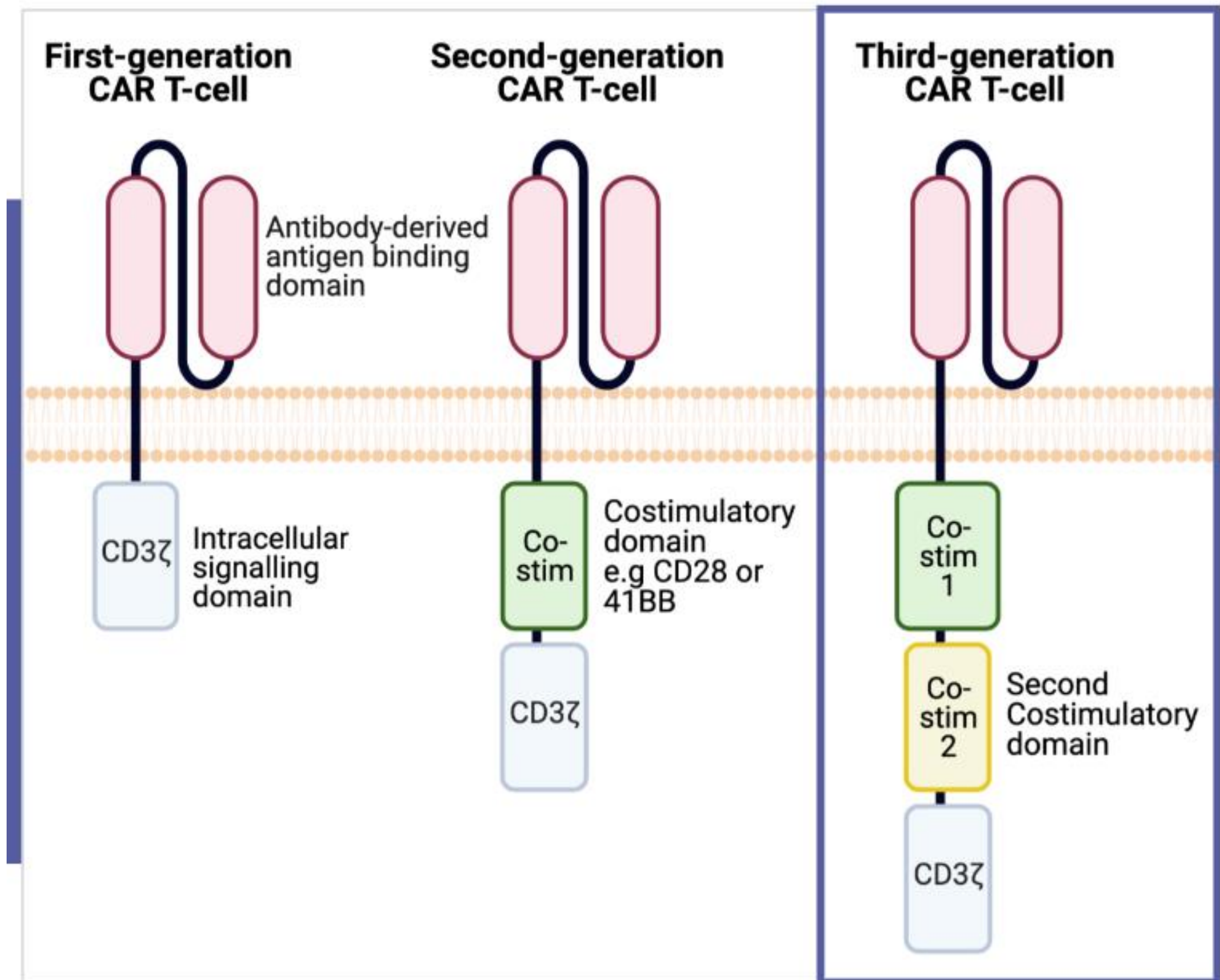


# Developing Breakthrough CAR T-cell Therapies



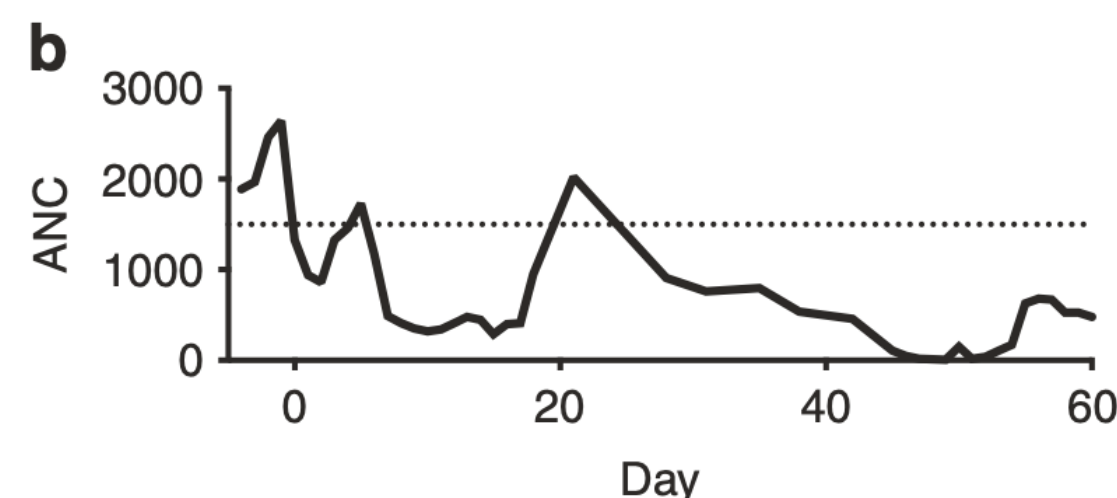
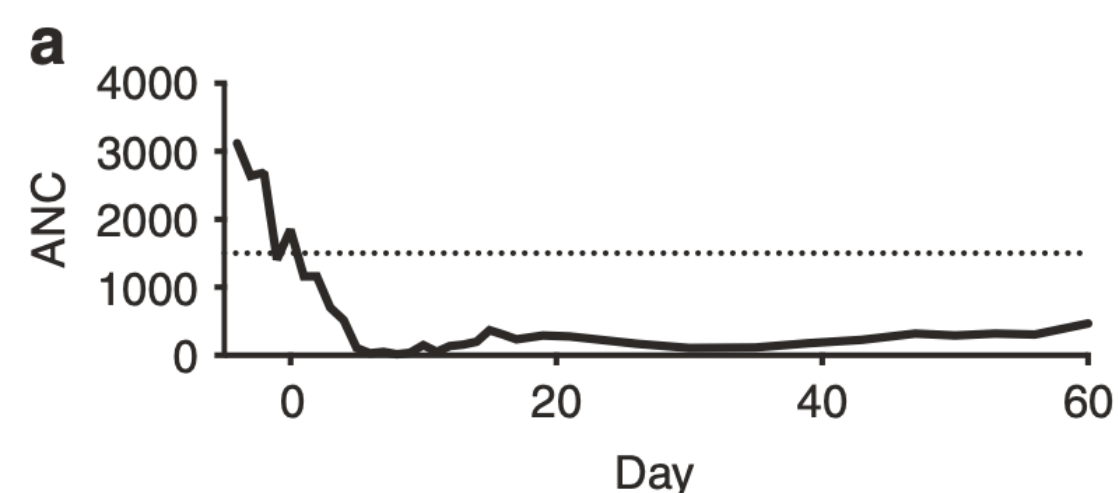
June 2022

# WZTL002 is a “third-generation CAR”



# WZTL002 acceptable safety profile compared to 2<sup>nd</sup> generation constructs

	WZTL-002	Axi-cab	Tisa-cel
<b>CRS</b>	<b>14% grade 2</b> <b>0% grade 3-4</b>	44% grade 2 13% grade 3-4	58% any grade 22% grade 3-4
<b>ICANS</b>	<b>0% grade 1-2</b> <b>0% grade 3-4</b>	64% grade 1-2 28% grade 3-4	21% any grade 12% grade 3-4

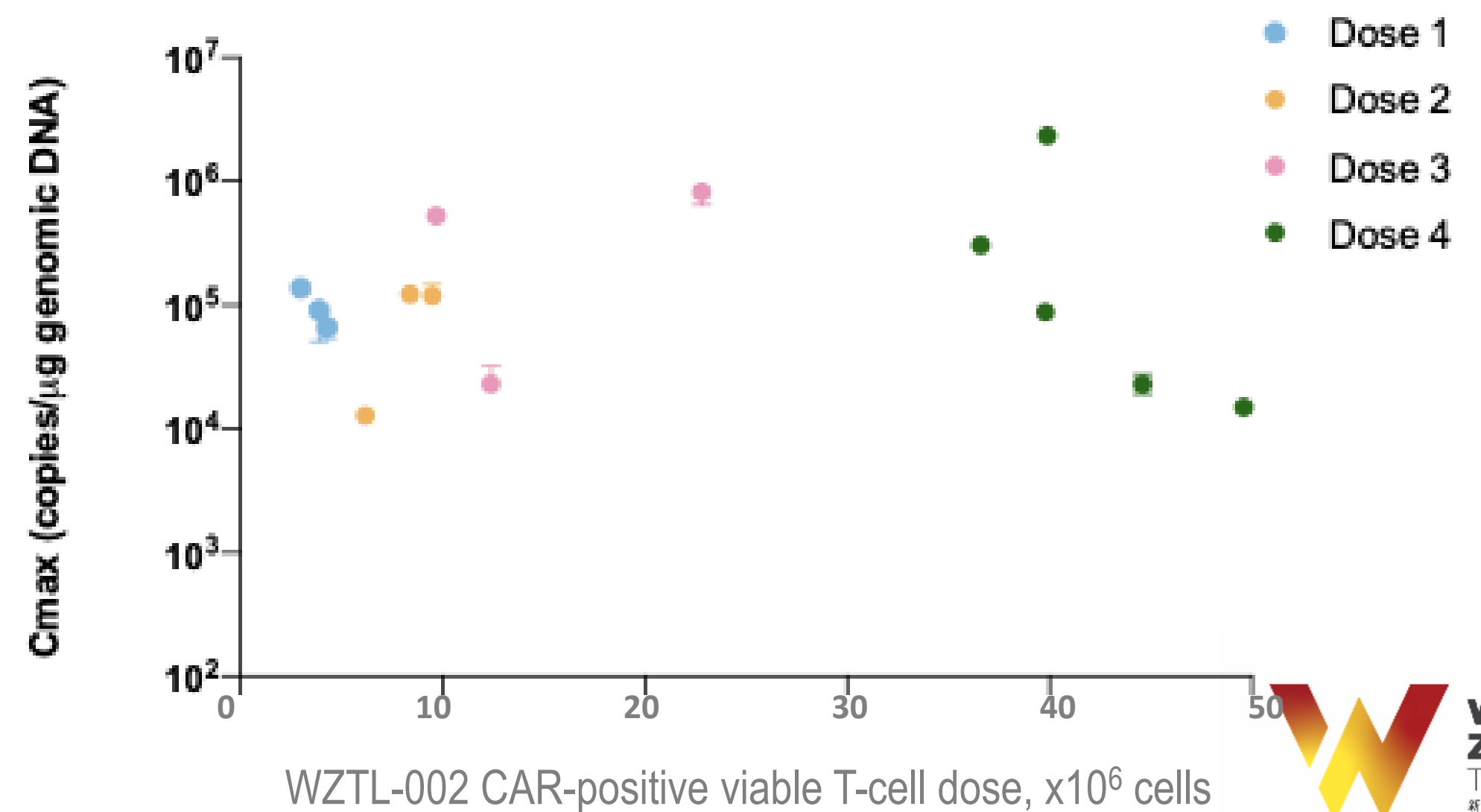
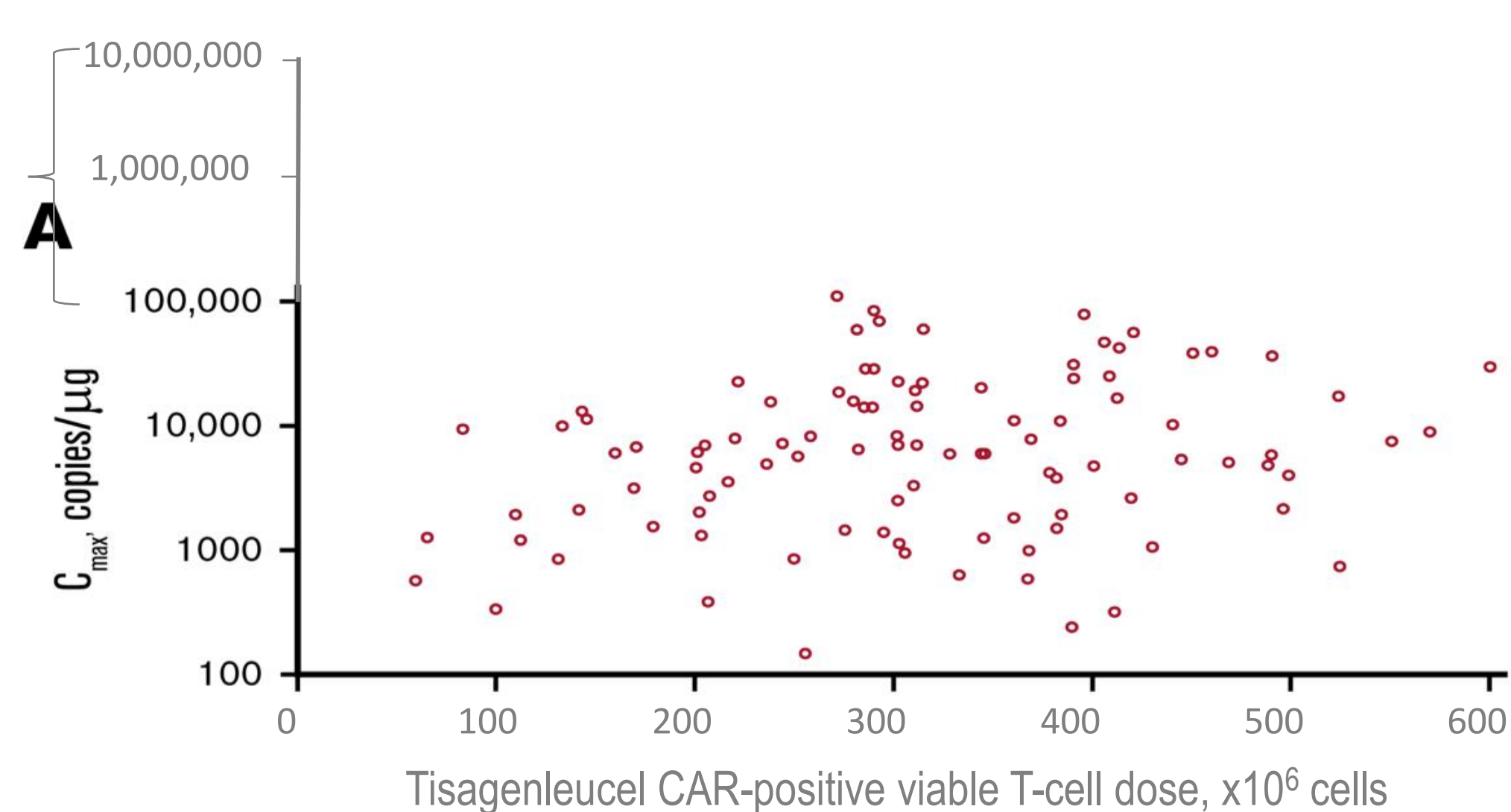


Month 3	WZTL-002	Axi-cab	Tisa-cel
Thrombocytopenia grade 3-4	<b>15%</b>	7%	38%
Neutropenia Grade 3-4	<b>0%</b>	11%	0%

Predominant pattern of cytopenias is of early drop (due to chemotherapy), followed by recovery and later drop (from CAR T-cells)

# WZTL002 peak expansion similar or superior to Tisa-cel

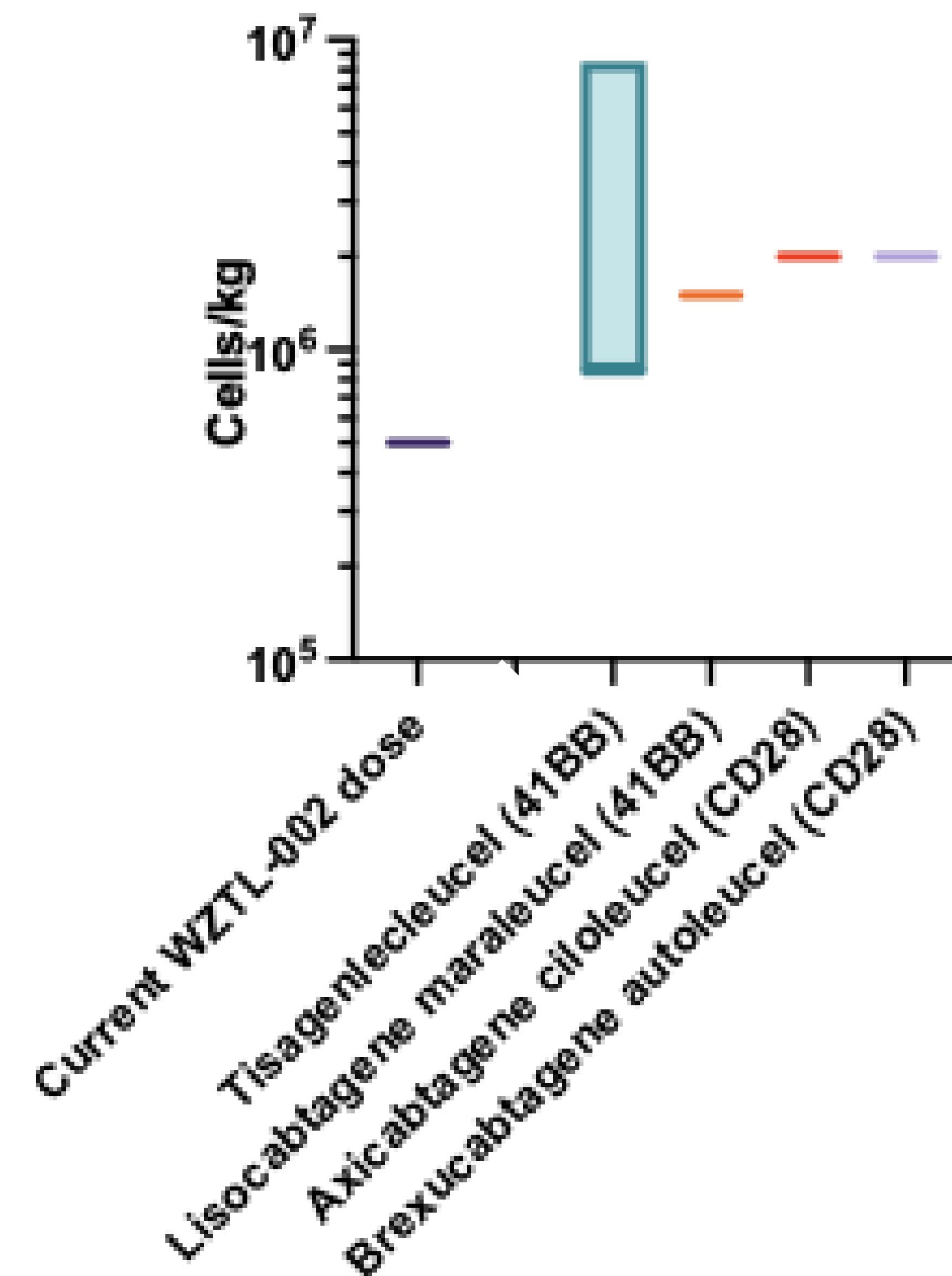
WZTL-002 vs Licensed products	Cmax (qPCR on blood; copies/ug)	AUC (qPCR on blood; copies/ug)
WZTL-002 @ 5 x 10 <sup>5</sup> cells/kg	88,367	672,673
Tisagenlecleucel (Kymriah)	5,530	64,600
Lisocabtagene maraleucel (Breyanzi)	23,928	213,730
Brexucabtagene autoleucel (Tecartus)	Not reported by copies/ug	
Axicabtagene ciloleucel (Yescarta)	Not reported by copies/ug	



# WZTL002 Lower dose compared to licenced 2<sup>nd</sup> generation CAR T-cells

Licensed product	Dosage (cells/kg)
<b>WZTL-002</b>	<b><math>5 \times 10^5</math> cells/kg</b>
Tisagenlecleucel (Kymriah)	$0.85 - 8.5 \times 10^6$
Lisocabtagene maraleucel (Breyanzi)	$1.5 \times 10^6$
Axicabtagene ciloleucel (Yescarta)	$2 \times 10^6$
Brexucabtagene autoleucel (Tecartus)	$2 \times 10^6$

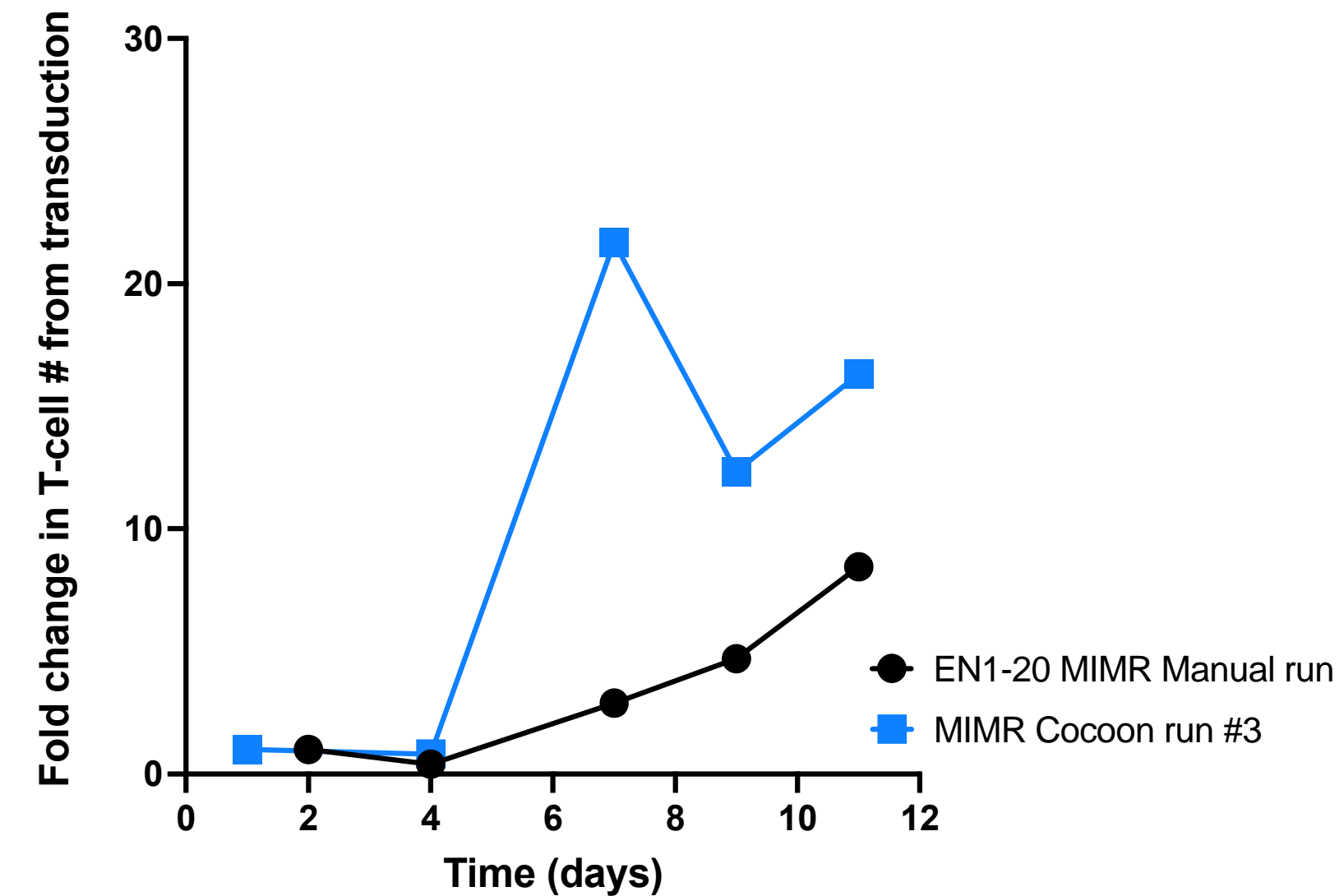
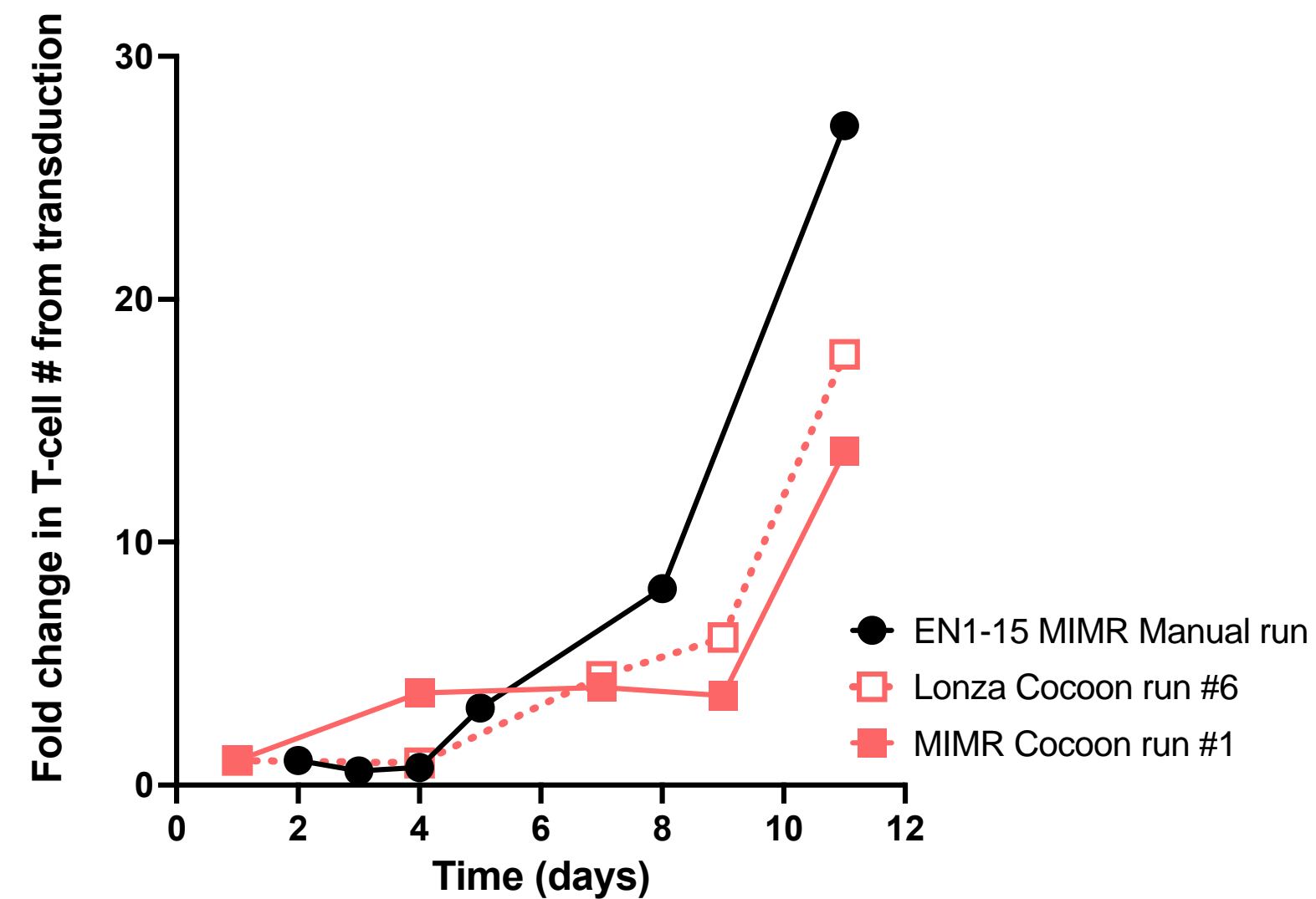
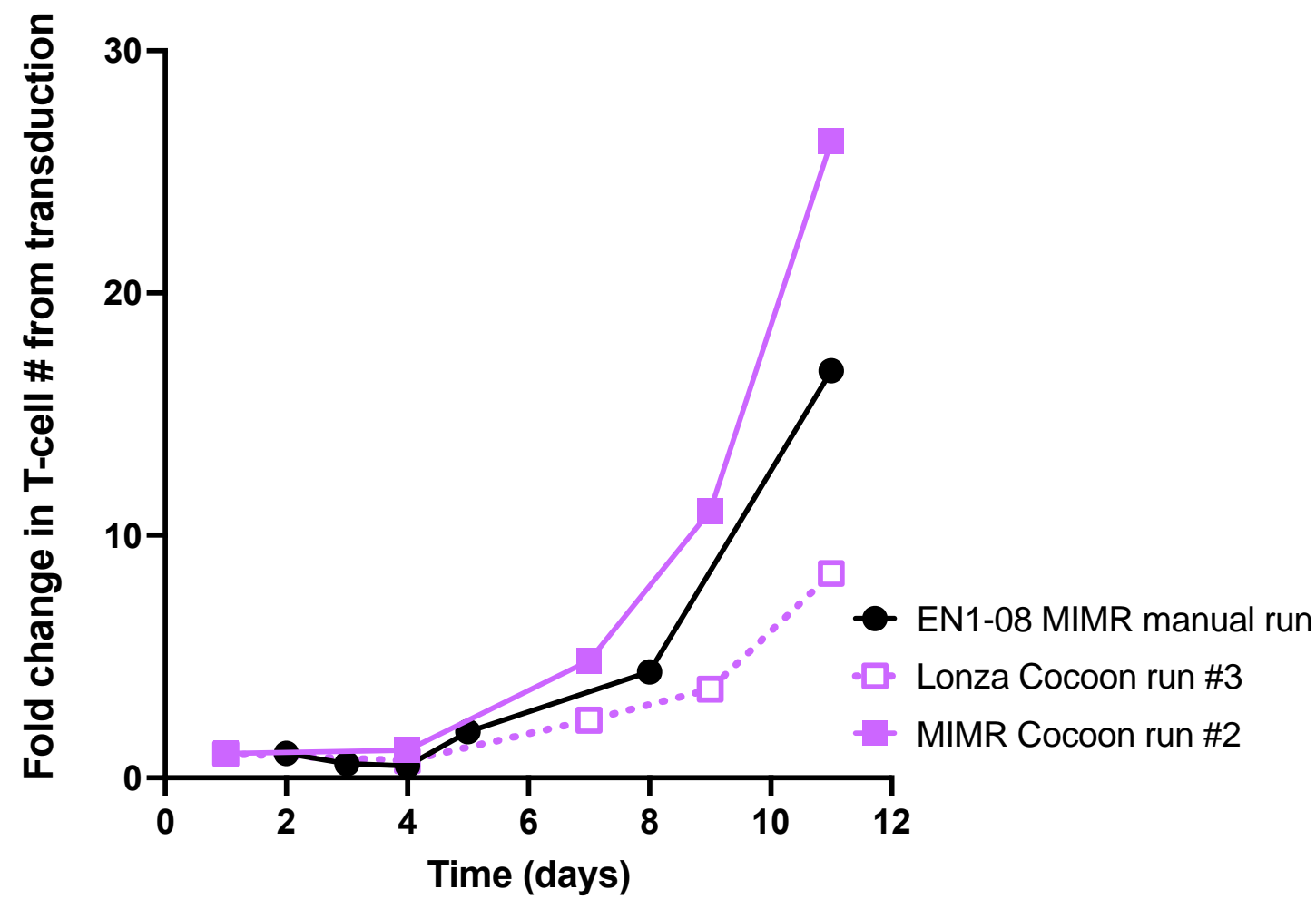
2nd generation CAR T-cell doses vs. WZTL-002



## Lower dose translates to:

- Lower starting cell numbers
- Reduced need of reagents and lentivirus (LV $\approx$ 1/3 of total cost of good)
- Indicative better safety profile
- Better safety profile offers out patient treatment option

# WZTL002 manufactured on manual and automated platform



CAR T-cell	Manual	Lonza	MIMR
%	10	22	43
# (x10 <sup>6</sup> )	141	96	260
5x10 <sup>5</sup> cells/kg dose met	Y	Y	Y

CAR T-cell	Manual	Lonza	MIMR
%	29	11	35
# (x10 <sup>6</sup> )	617	78	211
5x10 <sup>5</sup> cells/kg dose met	Y	Y	Y

CAR T-cell	Manual	MIMR
%	15	72
# (x10 <sup>6</sup> )	143	502
5x10 <sup>5</sup> cells/kg dose met	Y	Y

# Pipeline

- ❑ Humanized anti-CD19 CAR-T cells for treatment r/r B-ALL
- ❑ Dual CAR T-cell product using humanised anti-CD19 and BCMA scFvs in preclinical trial
- ❑ WZTL002 in  $\gamma\delta$ T (GDT) cells in pre-clinical development, clinical trial targeted for Q4 2022/Q1 2023
- ❑ Phase 1 solid tumor trials in China





Contact: Dr Neil Domigan, CEO  
[ndomigan@wellingtonzhaotai.com](mailto:ndomigan@wellingtonzhaotai.com)

